



## DEHUMIDIFIER

*SMALL, COMPACT BUT YET POWERFUL*

**HP 25** FUNK

SMALL, COMPACT

BUT YET

POWERFUL



## HP 25 AT A GLANCE

*Despite its compact shape, the **HP 25** presents high performance results.*

Whether in the basement, living area, exhibition room, archive or garage, the **HP 25** adapts perfectly to the room situation. With its functional and qualitative appearance, you can easily use the **HP 25** dehumidifier in a variety of situations.

*With its dehumidification capacity of up to 25 litres in 24 hours, the dehumidifier is extremely powerful and can therefore be used in rooms up to 250m<sup>3</sup>.* In line with this performance requirement, care was taken in component selection to achieve an optimum balance between performance and low-noise operation.

The strong, plastic-coated steel housing provides it with its high quality and robust appearance.



# EXAMPLES OF APPLICATION



» SHOWROOMS

» MUSEUMS

» LIBRARIES

» GALLERIES

» LIVING AREAS

» ARCHIVES

» HOBBY CELLARS

» STORAGE AREAS

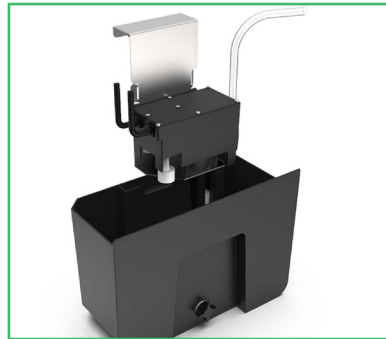
» GARAGES

# PROFESSIONAL CONTROL!

By using a professional control system and high-quality components, even challenging requirements can be met. An **electronic automatic defrosting system** as well as a **level monitoring of the water tank** with **automatic switch off** are of course included in the scope of the equipment. In addition, the **HP 25** enables extremely precise operation of the dehumidifier due to the use of a high-quality **humidity sensor**, as well as the percentage-accurate setting of the desired target humidity.

As a further option, a **radio-humidity system** is available, whereby the measuring accuracy can be increased once again, as the measurement is done at a distance from the device and is therefore not influenced by the function of the dehumidifier itself. This monitoring system can also be used in combination with a Brune humidifier, providing a complete humidification and dehumidification solution for a room.

**If needed, the HP 25 can be equipped with an automatic condensate pump, or operated with a direct drain.**



INCREASED  
MEASUREMENT  
ACCURACY BY  
**RADIO-HUMIDITY  
SYSTEM**

# PERFECT HUMIDITY SOLUTION



COMBINATION OF  
**HUMIDIFIER B 280 Funk** &  
**DEHUMIDIFIER HP 25 Funk**

COMBINATION  
OF **HUMIDIFIER**  
& **DEHUMIDIFIER**



**B 280 Funk**  
(alternative B 600 Funk)



radio-humidity-sensor



**HP 25 Funk**

\*Combined operation with the **B 500 Professional** humidifier is still possible.

# TECHNICAL DETAILS

» Temperature range *+5 °C - +32°C*

» Relative humidity range *30% - 80%*

» Nominal air flow *500m³/h*

» For rooms up to *250m³*

» Capacity water tank *6,5 litre*

» Rated voltage *230 V~50 Hz*

» Sound level *42-45 db(A)*

» Power consumption *0,571 kW*

» Drying capacity (l/24h)	<i>32°C – 80%</i>	<i>25</i>
	<i>20°C – 60%</i>	<i>12</i>
	<i>10°C – 60%</i>	<i>5</i>

## SPECIAL EQUIPMENT

» Radio humidity system


» Condensate pump

» Dimensions WxDxH [mm] *330 x 355 x 560*

» Weight *25 kg*

» Color *white*

» Electronic control *yes*

» Refrigerant *R290* 

» Global warming potential (GWP) *3*

» Ozone depletion potential (ODP) *0*

» Defrosting depends on ambient temperature, electronically controlled

# DEHUMID HP 25



# HP 25 FUNK DEHUMIDIFIER



---

**Luftbefeuchtung Proklima GmbH**  
Schwarzacher Straße 13  
74858 Aglasterhausen/Germany

E-Mail: [mail@brune.info](mailto:mail@brune.info)  
Web: [www.brune.info](http://www.brune.info)

Phone: +49 (0) 62 62 / 54 54  
Fax. +49 (0) 62 62 / 32 55